



TAHITI-FAA'A INTERNATIONAL AIRPORT BORA BORA AIRPORT RAIATEA AIRPORT RANGIROA AIRPORT



For almost 60 years, Tahiti-Faa'a International Airport has been the economic gateway for French Polynesia. It is supported by the domestic hubs of Bora Bora, Raiatea and Rangiroa.

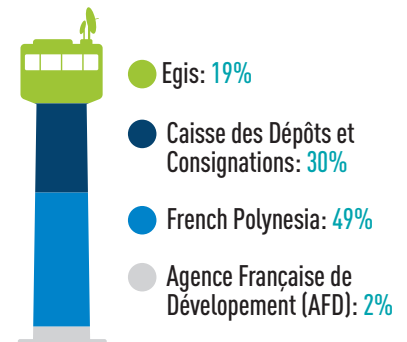
Today Tahiti-Faa'a International Airport serves ten destinations in Europe, North and South America, Asia and Oceania. It has a strategic role in opening up the 118 islands of French Polynesia, spread over an area equal to Europe, by connecting 41 domestic airports (thanks to the airports of Bora Bora, Raiatea and Rangiroa).

Tahiti-Faa'a airport meets all the requirements of international airlines, and is open 24/7. In 2019 it handled 1,471,551 passengers, the majority international tourists.

As of 2010 important investments have been made made to improve service levels and ensure facilities are compliant with the most challenging international standards. The final stage of the investment programme consists of the refurbishment of the passenger terminal building.



Shareholders:



EGIS KNOW-HOW

As technical partner of choice, Egis supports management of the airport in critical areas from engineering services to airport operations. Egis has put in place a dedicated team of highly skilled managers with sound technical and operational skills.

Since the beginning of operations in 2010 the partnership with Egis has translated into several strategic projects, some already completed, others currently in progress. These projects are multifold, and concern a significant array of subjects, including: project management and studies for the apron and runway reinforcement works, airport operations training for all staff, and procurement management for specific safety or security equipment.

The airport benefits from the Egis international airport network, which includes important operational feedback from other concessions, as well as economies of scale.



Start of concession: **2010**



Investment:
50 million Euros



Economic assets French Polynesia

Area :

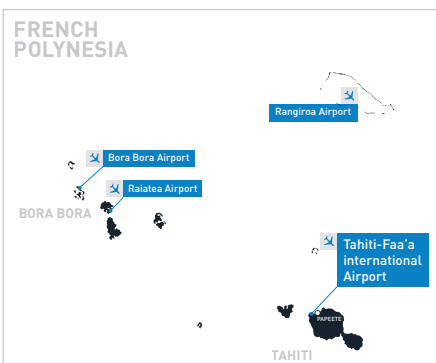
5,5 million km²

Population: **276,000**

⊕ Services (Tourism)

French Polynesia:

- › An iconic island paradise destination
- › 5 archipelagos, 118 islands
- › Diversified and sufficient hotel capacity, particularly for high-end tourists
- › Reliable air network between islands
- › An ideal location at the crossroads of four continents
- › Astonishing cultural and natural assets



CHALLENGES



- ⊙ Ensuring international security and safety compliance whilst raising service levels
- ⊙ **Infrastructure and Investments**
 - › At the start of operations, in 2010, ADT (Aéroport De Tahiti) implemented substantial capital expenditure plans with respect to safety and security. This expenditure was consistent with ADT's number one priority the safety of aircraft operations. In parallel, other investments were undertaken to improve the general infrastructure of the airport, upgrading the overall passenger experience at arrival and departure circuits: extension of duty free shops at the departure area, renewal of the international arrival area with the creation of a polynesian arts centre and the development of a duty free shops at the arrival area.
- ⊙ **Upcoming developments**
 - › ADT aims to take advantage of the proximity of the city centre, with projects including, in the medium and long term, the development of an «Airport City» offering a multitude of conveniences.
 - › The development plan for the airport's public area will include the renovation of the hall, its extension and the creation of a living area (shops, restaurants, bars, business centres) with facilities adapted to all passengers.
- ⊙ **Raising operational standards and implementing continuous improvement**
 - › To identify areas for improved quality and passenger experience, Tahiti Faa'a International airport participates in the ASQ Survey (Airport Service Quality), conducted by ACI (Airport Council International).
 - › ADT has been certified ISO 9001 in 2016.

Tahiti-Faa'a International Airport is strategically located at the crossroads between Asia and South America, two of the fastest growing economic regions in the World. This strategic geographical location gives it a major asset and represents a real opportunity for new air services.

ADT strives to offer services that meet international standards, ready to welcome new passengers.

KEY FIGURES

	2017	2018	2019	2020 <i>Covid impact</i>
PASSENGERS	1,908,182 including 1,283,675 domestic traffic	2,045,029 including 1,364,492 domestic traffic	2,165,631 including 1,425,742 domestic traffic	1,033,788 including 740,313 domestic traffic
MOVEMENTS	50,160 including 31,551 domestic traffic	55,707 including 34,374 domestic traffic	59,916 including 35,625 domestic traffic	45,708 including 21,964 domestic traffic
CARGO (tonnes)	13,406 including 2,184 domestic traffic	14,082 including 2,437 domestic traffic	18,835 including 2,471 domestic traffic	6,829 including 1,613 domestic traffic

IMAGINE. CREATE. ACHIEVE.
the airports of tomorrow

www.egis-group.com

Follow Egis on:



Egis
15, avenue du Centre - CS 20538 - Guyancourt
78286 Saint-Quentin-en-Yvelines Cedex - France
Tel.: +33 1 39 41 40 00
E-mail: contact.egis-airport-operation@egis.fr

