



## BREST BRETAGNE AIRPORT QUIMPER BRETAGNE AIRPORT

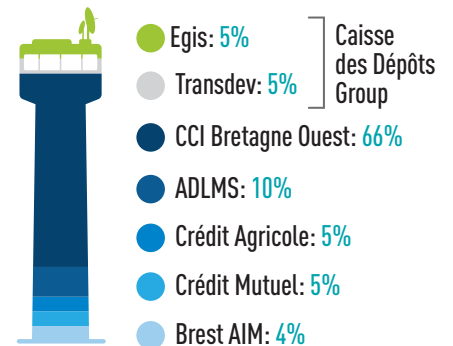
In Western Brittany, more than in any other region of France, opening to the outside is a means of stimulating development and creating sustainable employment. In this context, the Brittany Region has delegated for a period of 20 years the management and operation of Brest and Quimper airports to a consortium made up of Chamber of Commerce & Industry of Western Brittany, Egis and local partners.

This innovative structure is based on complementary characteristics of the two airports and sharing of resources via a principal structure Aéroport Bretagne Ouest (ABO) and its subsidiary dedicated to Quimper, Aéroport de Cornouaille (ADC).

Since 2012, Brest airport welcomes more than a million passengers a year. This is mainly due to solid demand for flights to and from Paris (Orly and Charles de Gaulle airports). As the 18th largest airport in France, Brest demonstrates an impressive standard of high performance equipment in particular a reduced visibility landing assistance system and a runway length of 3,100 m enabling landing of all types of aircraft.



### Shareholders:



Aéroports  
**Brest Quimper Bretagne**

### EGIS KNOW-HOW

Egis is a preferred technical partner for ABP and ADC's consortium, using its combined expertise to develop, operate and manage the two airports in Brittany. Key Egis responsibilities include mobility and road/rail access as well as non aeronautical business development such as commercial site development and value-added initiatives. As well as being involved in sustainable development and environmental plans for both airports, Egis plays a key advisory and engineering assistance role in relation to the airport investment programmes.



Concession period: **20 years**

Start of concession: **2017**



Investment:  
**48 million Euros**



## Economic assets France

Area: **543,965 km<sup>2</sup>**  
(France excluding Corsica and overseas territories)

The world's **5<sup>th</sup>**  
largest economic power

Population: **66,900,000**

Brest: **139,000**

Quimper: **63,000**

- ⊕ Maritime
- ⊕ Agro-Food industry
- ⊕ Services (Tourism)

### Brest:

- › Gateway to Brittany region
- › Maritime hub
- › Military port
- › Oceanopolis: ocean discovery park
- › Maritime research technology businesses
- › Preserved natural environment
- › Festivals and cultural activities

### Quimper:

- › Administrative centre of Finistère region
- › Cultural capital of Brittany recognized nationally as a "City of Art and History"
- › Architectural heritage
- › St Corentin and Palais des Evêques Cathedrals
- › Odet Quays
- › Quimper Musical Weeks
- › Cornwell festival
- › Cartoon festival






## CHALLENGES

- ⊙ Sustainable development of both airports, gateways to Western Brittany
  - ⊙ Stimulate airport growth and adapt airport infrastructure
  - ⊙ Determine an ambitious and diversified site development plan
- ⊙ **For Brest**
    - › Extension of aircraft parking area
    - › Creation of pre-boarding spaces
    - › Reconfiguration of car parks
    - › Extension of the west terminal (+400,000 passengers)
    - › Improvement of security control check-point
    - › New check-in equipment
    - › Redevelopment of shopping spaces
    - › Reconversion of the old terminal building into an airport terminal dedicated to business aviation
    - › Creation of a helipad
    - › Development of a new fuel farm
    - › Construction of a new Aircraft Rescue and Fire Fighting building
    - › Environmental plan: photovoltaic shading and renewal of handling equipment
  - ⊙ **For Quimper**
    - › Extension of the airport terminal
    - › Implementation of LPV approaches enabled by GNSS
    - › EASA (European Aviation Safety Agency) certification
    - › Total upgrade of the runway, taxiways and parking spaces for airplanes
    - › Upgrading of safety zones on either side of the runway
  - ⊙ **Development**
    - › Complementary Brest-Quimper development strategy to ensure strong servicing of the Paris Orly line in response to competition from the high-speed rail line and building transit traffic at Paris Charles de Gaulle towards key European destinations
    - › Develop the offer targeting inbound and outbound long haul leisure market
    - › Meet the requirements necessary for establishment of a low-cost airline base

## CERTIFICATIONS

- › Airport Carbon Accreditation (ACA) level 1

## KEY FIGURES

	2017	2018	2019	2020 <i>Covid impact</i>
 <b>PASSENGERS</b>	<b>1,128,982</b> including Brest 1,046,579	<b>1,184,006</b> including Brest 1,104,699	<b>1,293,828</b> including Brest 1,236,121	<b>469,072</b> including Brest 461,788
 <b>MOVEMENTS</b>	<b>26,048</b>	<b>26,427</b>	<b>24,694</b>	<b>14,576</b>
 <b>CARGO (tonnes)</b>	<b>3,514</b>	<b>4,033</b>	<b>4,186</b>	<b>3,757</b>

IMAGINE. CREATE. ACHIEVE.  
*the airports of tomorrow*

[www.egis-group.com](http://www.egis-group.com)

Follow Egis on:

Egis  
15, avenue du Centre - CS 20538 - Guyancourt  
78286 Saint-Quentin-en-Yvelines Cedex - France  
Tel.: +33 1 39 41 40 00  
E-mail: [contact.egis-airport-operation@egis.fr](mailto:contact.egis-airport-operation@egis.fr)

